



Fairfield Gardens | | Sandown | PO36 9EY

£850 Per month



Merriebank
LETTINGS

Fairfield Gardens | Sandown | PO36 9EY £850 Per month

A well-presented two bedroom semi-detached house situated in a quiet cul-de-sac just off Perowne Way in Lake, close to Sandown.

The property benefits from a private driveway providing parking for two cars. To the front, a small porch leads into a comfortable lounge and onto a fitted kitchen with space for a washing machine & fridge.

Upstairs, there are two bedrooms, one of which includes a built-in cupboard for convenient storage, along with a separate family bathroom.

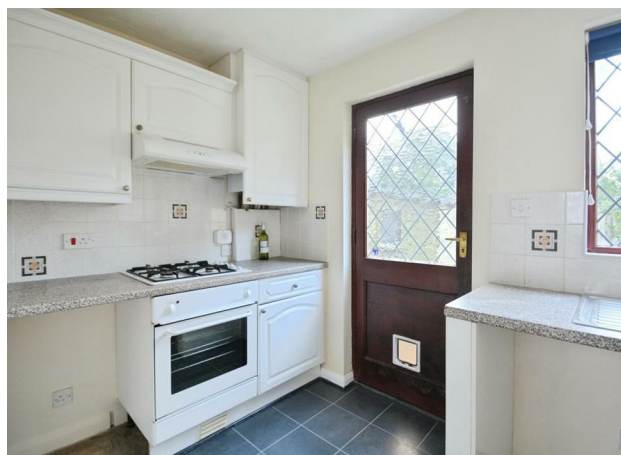
Externally, the home boasts an enclosed rear garden, mainly laid to grass with a decked seating area and a garden shed. The garden also benefits from both rear and side access, making it practical as well as private. Additional features include gas central heating and double glazing throughout.

This small pet friendly family home is ideally positioned within easy reach of local schools, supermarkets, pubs, the seafront and beautiful sandy beaches. Excellent transport links are nearby, including regular bus routes and the train station, while scenic countryside walks and pleasant views are right on your doorstep.

Located in a popular residential area, this property offers a peaceful setting while remaining close to all local amenities and coastal attractions, making it an ideal long-term home.

- Semi-detached house
- 2 Bedrooms
- Private driveway for two cars
- Quiet cul-de-sac location
- Near seafront and beaches
- Family bathroom & Kitchen
- Good size Lounge
- Enclosed rear garden
- Close to schools and shops
- Pet Friendly

Council Tax Band **B** | EPC Rating **C**



Energy Efficiency Rating

	Current	Potential
Very energy efficient - lower running costs		
(92 plus) A		
(81-91) B		
(69-80) C	74	
(55-68) D		
(39-54) E		
(21-38) F		
(1-20) G		
Not energy efficient - higher running costs		
England & Wales	EU Directive 2002/91/EC	